

## GATEWAY 9550 COMPLETE DISASSEMBLY GUIDE

- Remove Battery, CD ROM, Floppy Drive.
- Remove hard drive assembly under Floppy Drive Unit.
- Remove Memory Cover and Memory
- Remove Wireless Cover & Wireless Card.
- Remove Power button plate by gently prying up from the right hand side.
- Remove Keyboard ( 2 Screws, release tab on left hand side). Release ribbon cable.
- Remove Display. Gently pry up hinge covers.
- Remove metal plate over display cable ( 2 screws, long on left / short on right).
- Detach Display Cable.
- Remove Display Mount Screws (4 screws).



- Remove Front Speaker Assembly (4 Screws on bottom front). Leave ribbon cable attached.
- Remove Screws (4) from front of Main Chassis exposed after the Speaker Assembly is removed.

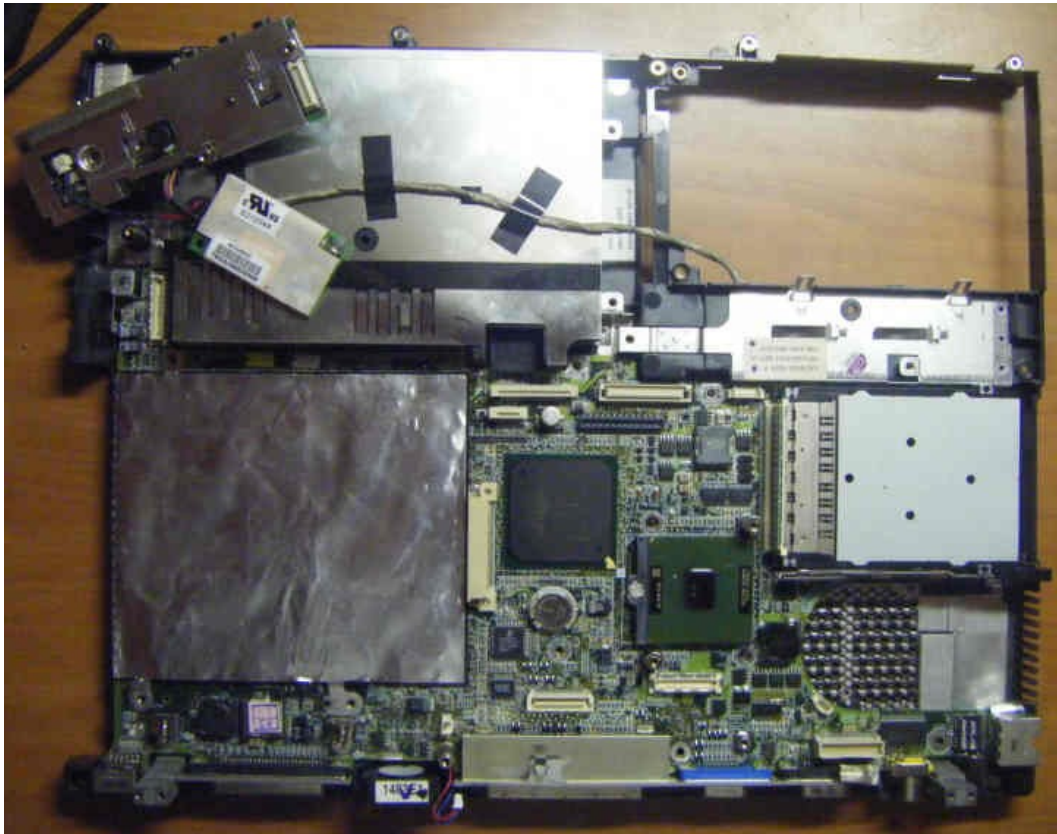
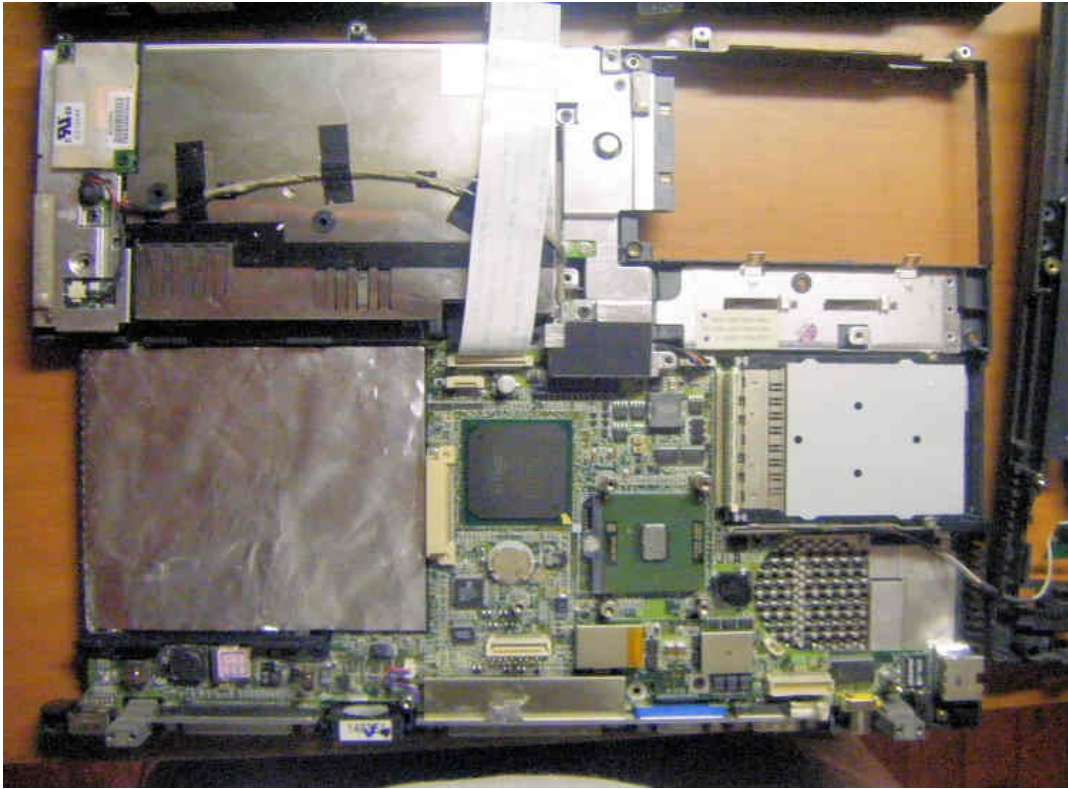
## GATEWAY 9550 COMPLETE DISASSEMBLY GUIDE

- Remove (11) Screws from Bottom of Chassis. + (4) Short Screws parallel to rear feet.



- On top of Chassis, Remove (1) screw in front of Touchpad, (1 black) screw near center of powerboard, (1 silver) screw at the back of powerboard.
- Remove Heatsink Assembly (6) Screws. Detach Fan power clip. ( Antennae wires run under heatsink and thread under PCI mount to bottom of board)..
- You can now remove Top Assembly.
- Lift front of Top Chassis Cover and Detach Speaker Ribbon Cable, Detach Touchpad Cable.
- Remove Video chip board (1) screw.
- Detach hard drive interface (HDI) (4) screws.
- Detach Ports interface clip. Wire is Threaded under HDI screw mounts.
- Remove (2) Modem screws. Lift Modem. Keep wires clip attached.
- Remove (2) Port Assembly screws. Lift Port Assembly. Keep wires attached.
- Remove (6) hex heads on rear of chassis. Remove (2) screws from Docking Mount.
- Remove (2) long screws from PCI mount.

# GATEWAY 9550 COMPLETE DISASSEMBLY GUIDE



## **GATEWAY 9550 COMPLETE DISASSEMBLY GUIDE**

- Remove (2) screws adjacent to Parallel port. (Hole 4, 5)(Holes are labeled on mobo).
- Remove (5) HEX Mount posts (Hole 3, 8, 10, 12, 13). (DO NOT REMOVE ROUND POSTS ADJACENT TO PROCESSOR).
- Remove Front CD ROM rail (1) screw, slide out.
- Remove Rear CD ROM rail (2) screws.
- Detach red/blue fan clip.
- Lift Board from front and slide away from rear face plate.
- Done.